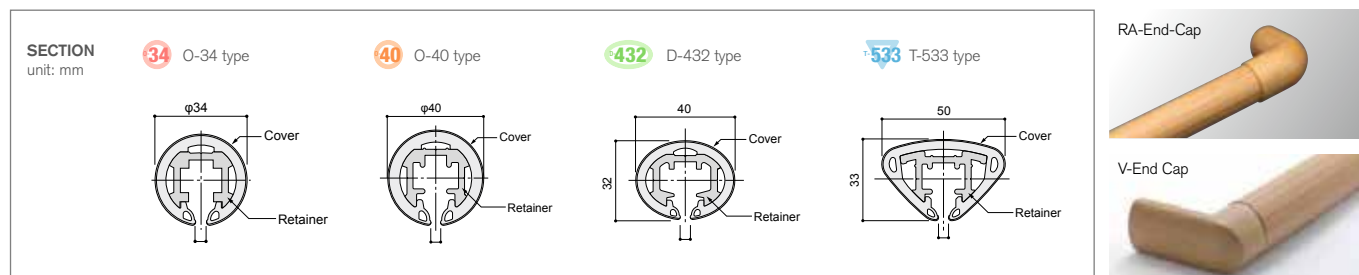


When using a handrail, two actions of "grip" and "slide" are accompanied, so the handrail is continuous, easy to grip and easy to slide is the best shape. Typical circular 34 and 40, and even elliptical shapes made for ease of use are available.

The bracket that supports the grip part is easy to use and safe, supporting shape from below as shown in the figure. It is because it is difficult for the bracket to touch the fingers, so you can grasp the handrail firmly and it will not get in the way when sliding.

The handrail of the part that receives the bracket can be said to be a safer handrail, which is easy to use with less discomfort when grasping in a circular shape.

Colour are available in wood grain finish for NEOWOOD and plain colour for VINILANE.



A series that supports a safe and comfortable walk from indoors to outdoor.

NEO WOOD



Lobby and Stairway Railings {NEO WOOD}
(for indoor use)

NEO WOOD
O-40M / D-432M
O-34M

Railings of a new material that surpasses the properties of wood while retaining its warmth. Cover of ultrafine particle wood powder (wood powder) compound resin. Uses anti-mould and bacteria-resistant compound resin.

■ SPECIFICATIONS

Cover / Wood Power Mixture Semihard Resin
(with antibacterial agent) + Soft Resin Dual forming
Retainer / Extruded Aluminium A6063S-T5
Joint cover / Soft Resin

VINI LANE



Lobby and Stairway Railings {VINI LANE}
(for indoor use)

VINI LANE
O-40V / D-432V
O-34V

Dual moulding with semihard resin eliminates sticky sensation. Wide colour variation. Uses anti-mould and bacteria-resistant compound resin.

■ SPECIFICATIONS

Cover / Semihard Resin (with antibacterial agent)
+ Soft Resin Dual Moulding
Retainer / Extruded Aluminium A6063S-T5
Joint cover / Soft Resin

GRAWOOD, GRAHAN (For Outdoor Use)



Lobby and Stairway Railings
{GRA HAN / GRA WOOD}

GRA HAN
O-40G / O-34G / D-432G
GRA WOOD
O-40GM / O-34GM / D-432GM

Graft resin compound. Superbly weather-resistant railing for outdoor use. One-tenth of the heat conductivity ratio of metals. Also reduces the coldness of the cover in wintertime. Uses anti-mould and bacteria-resistant compound resin.

■ SPECIFICATIONS

Cover / Semihard Graftmer Resin (with antibacterial agent) + Soft Resin Dual forming
Retainer / Extruded aluminium
A6063S-T5 Anodised finish
Joint cover / Soft Resin

LED HANDRAIL



A New Genre of Lighting for Buildings

■ EFFECTS

The subtle production of space by Stella Light. The introduction of Vinilane and Grahan in the handrail for the lobby/staircase has made it possible to produce illumination at foot level, absent until now, by use of the same solution applied to the handrail.

■ A SUBTLE DETERMINATION THAT SEEKS TO CHARM

Light-based guidance and direction. An achievement made possible by high-grade LED technology. A new product from Naka Corporation upholding peace of mind.

■ ECO

Because it is an LED, it conserves energy, has a long service life, and saves space. Achievement of excellent cost performance. Unlike fluorescent lights, it contains no mercury gas, and thus will still be clean at the time of disposal.

■ SLIM-JOINTED HANDRAIL

The handrail incorporating Stella Light is a slim-jointed handrail with a high level of safety developed by Naka Corporation. The safety is further enhanced with a structurally feasible groove (joint) under the railing, kept at a width of 5mm or less.

LUMINANCE HANDRAIL



To Ensure Safety in Darkness

We have placed two luminescent lines on the railings. The luminescent material stores light, which it then emits for a long time in the darkness. Because of this, it is possible to move safely after the lights go out.

■ MATERIAL

- We use newly developed luminescent material that, with light from fluorescent lamps and the like, can emit light for a long time.
- Since the luminescent material emits light that has been stored as energy, it requires no energy such as electric power
- The function of the luminescent material lasts semi-permanently.

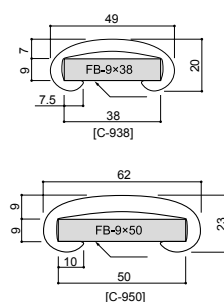
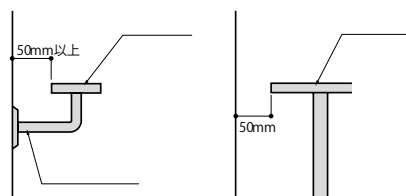
STAIRS HANDRAIL



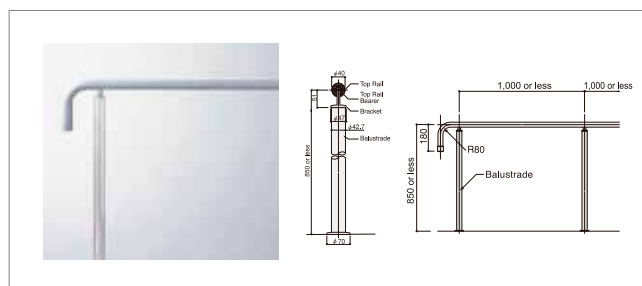
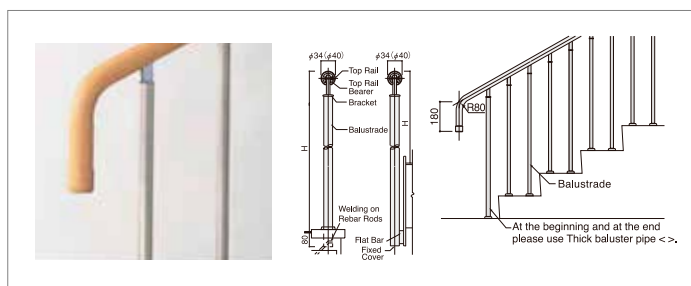
it is a type of soft hand-friendly vinyl handrail that covers the flat bar. The Cover is dirt resistant and excellent in durability.

■ MATERIAL

Cover / soft vinyl chloride resin extrusion molded product



STANDARD BALUSTER

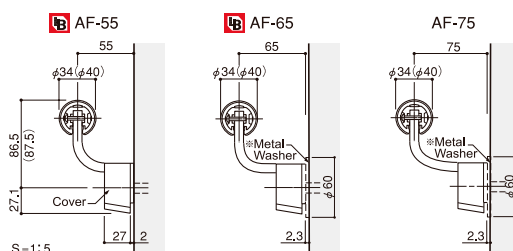


AF-55, AF-65, AF-75



■ SPECIFICATIONS

Bracket / Indoors : Extruded Aluminium A6063S-T5
Anodised finish 6μ
Outdoors : Extruded Aluminium A6063S-T5,
Anodised finish 9μ
Top Coat 7μ
Cover / ABS plastic : Washer / Glossy Chrome Plate
Finishing (Used when there is Board Wall)



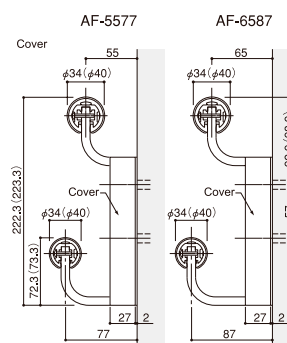
AF-5577, AF-6587



Choose according to heights ranging from children to adults Double Railing Bracket

■ SPECIFICATIONS

Bracket / Indoors : Extruded Aluminium A6063S-T5
Anodised finish 6μ
Outdoors : Extruded Aluminium A6063S-T5,
Anodised finish 9μ
Top Coat 7μ
Cover / ABS plastic



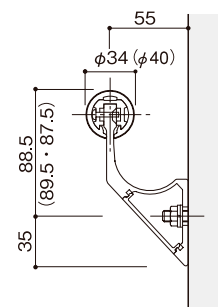
JS-55



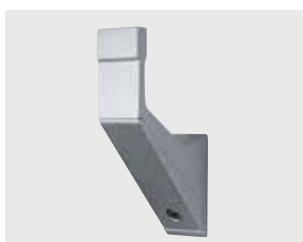
Unobtrusive Highly Safe High-Grade Type

■ SPECIFICATIONS

Main Body /
For Indoors : Zinc Die Cast Moulded Parts Glossy Silver
Anodised Finish.
For Outdoors : Zinc Die Cast Moulded Parts Glossy Silver
Anodised Finish + Top clear Coat 20μ
Cover / ABS Moulded Parts Glossy Silver Anodised Finish.



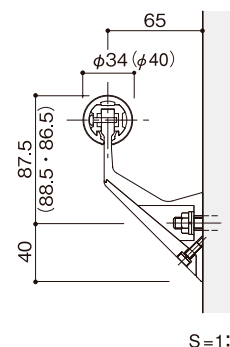
AGS-65



High-Grade Type

■ SPECIFICATIONS

Main Body /
For Indoors : Extruded Aluminium A6063S-T5 Anodised
finish 6μ
For Outdoors : Extruded Aluminium A6063S-T5 Anodised
finish 9μ Top Coat 7μ



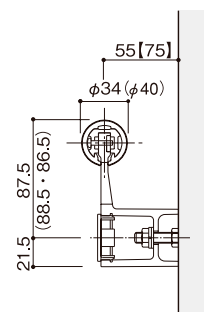
US-55, US-75



High-Grade Type that Caters for Safety.

■ SPECIFICATIONS

Main Body /
For Indoors : Zinc Die Cast Moulded Parts Glossy Silver
Anodised Finish.
For Outdoors : Zinc Die Cast Moulded Parts Glossy Silver
Anodised Finish + Top clear Coat 20μ
Cover / ABS Moulded Parts Glossy Silver Anodised Finish.
Washer / Glossy Chrome Finishing (Used when there is Board Wall)



■ Test Contents

Test Conditions/Carried out at the company in accordance with JIS-A1415

Testing Machine/Sunshine Weather Meter

Exposure Time/800 hours (Indoor Railing), 5,000 hours (Outdoor Railing)

■ Test Results

Railing for Indoor Use (Neo Wood • Vini Lane)				
Item Hrs exposed	Neo Wood		Vini Lane	
	Colour Fading	Surface Condition	Colour Fading	Surface Condition
200 hrs	○	○	○	○
400 hrs	○	○	○	○
600 hrs	○	○	○	○
800 hrs	○	○	○	○

Railing for Outdoor Use (Gra Wood • Gra Han)				
Item Hrs exposed	Gra Wood		Gra Han	
	Colour Fading	Surface Condition	Colour Fading	Surface Condition
500 hrs	○	○	○	○
1000 hrs	○	○	○	○
2000 hrs	○	○	○	○
3000 hrs	○	○	○	○
4000 hrs	○	○	○	○
5000 hrs	○	○	○	○

Evaluation Standards		
Colour Fading	Surface Condition	Symbol
No fading	No change	○
Small amount of fading	Small amount of rough surface	○

Strength • Hardness Testing

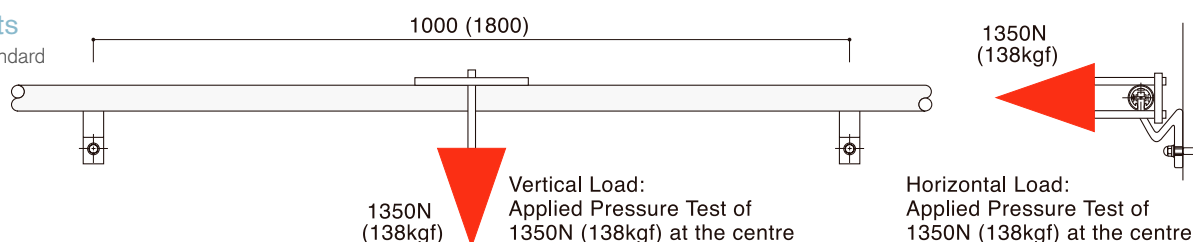
■ Test Contents

Test Conditions/For the hardness of the railing, the strength to withstand a horizontal vertical load of 1350N (138kgf) per span.

Test samples / O-40M, O-34M, O40V, O34V, O40G, O34G; Bracket Span 1,000mm P-34G; Bracket Span 1,800mm

■ Test Results

Passed the BL standard



Antibacterial Properties

■ Bacteria (Microbes)

Microbes are extremely tiny living organisms that are broadly divided into a number of types including mould, bacteria, yeast, actinomycetes, algae and the like. 57 types of microbes have been detected in buildings in hot and humid Japan.

■ Antifungal and Antibacterial Properties

In such an environment, railings are touched by the hands of many different people, and there is a concern that fungi and bacteria will become foreign bodies spreading infection. Our company, by means of kneading complex organic antimicrobial agents into the resin section, are in possession of a function that suppresses the propagation of bacteria (microbes) by halting or reducing their activities.

■ Test Contents

Party Requesting the Tests/Japan Food Research Laboratories Culture Medium for the Testing/ For Bacteria=Culture Medium Employing Sensitivity Disk;
For Mould = Potato Dextrose Nutrient Agar

Test Methods / 1 Culture the text bacteria in a sterilised Petri dish, forming a base layer. Place the test body on the base layer.

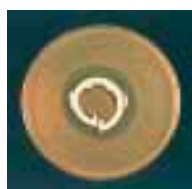
2 After letting the bacteria sit 24 hours and the mould for 4 hours, inspect whether there is a band around the test body in which growth is being prevented.

■ Test Results

Cladosporium /
Formation of 23.5mm
prevention band



E. Coli Bacteria /
Formation of 5.0mm
prevention band



Methicillin-resistant
Yellow Staphylococcus /
Formation of 9.9mm
prevention band



Salmonella /
Formation of 6.1mm
prevention band



Yellow Staphylococcus /
Formation of 11.2mm
prevention band

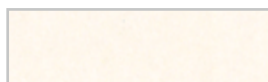


E. Coli Bacteria
(Serotype O157:H7) /
Formation of 5.5mm
prevention band

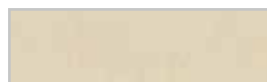


PLAIN COLOURS FOR INDOOR USE

Standard colours



NO.11 - Ivory White



NO.12 - Light Berge



NO.13 - Beige

Indent colours



NO.02 - Grey



NO.22 - Light Brown



NO.23 - Chocolate

WOOD COLOURS FOR INDOOR USE

Standard colours



NO.71 - Natural



NO.73 - Birch



NO.74 - Teak

Indent colours



NO.72 - Cherry



NO.75 - White Teak



NO.70 - Light Oak

FOR OUTDOOR USE PLAIN COLOURS

Standard colours



NO.03 - Dark Grey



NO.12 - Light Berge



NO.13 - Beige

Indent colours



NO.02 - Grey



NO.22 - Light Brown



NO.23 - Chocolate

FOR OUTDOOR USE WOOD COLOURS



NO.90 - Oak



NO.91 - Sepia Brown

SPECIAL INDENT COLOURS FOR INDOOR / OUTDOOR HANDRAIL



NO.04 - Soft Black



NO.10 - Plain White



NO.05 - Black



NO.45 - Wine Red



NO.51 - Olive Green



NO.62 - Dark Blue