

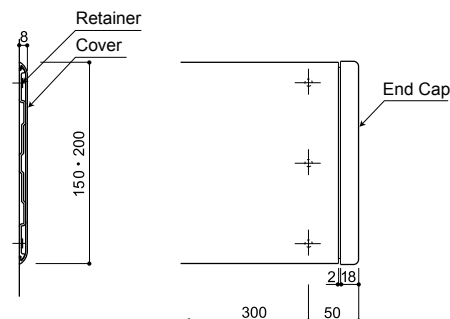
## NS-150/200



It is a thin stretcher guard (kick guard) that fits the wall. It adopts a hard resin resistant to shock and guards the wall.

### ■ MATERIAL

Cover / impact resistant hard resin  
(with antibacterial agent)  
(woodgrain toning is mixed with wood powder)  
Retainer / impact resistant hard resin  
End cap / ABS Plastic



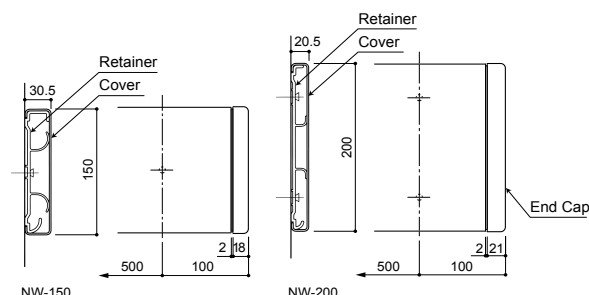
## NW-150/200



It is a wall protection material installed in corridors, carrying-in aisles and because of the hollow structure, it has excellent impact absorbing power.

### ■ MATERIAL

Cover / impact resistant hard resin  
(with antibacterial agent)  
(woodgrain toning is mixed with wood powder)  
Retainer / impact resistant hard resin  
End cap / ABS Plastic



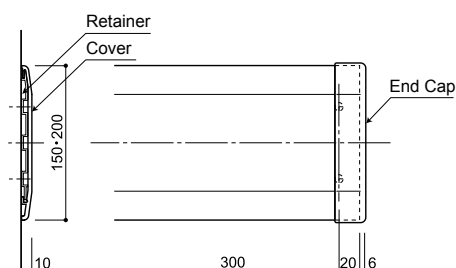
## FW-150/200 (SOFT TYPE)



It is a thin stretcher guard that adapts to the wall and is softness when touching the unique soft resin.

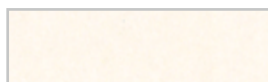
### ■ MATERIAL

Cover / soft resin  
(antibacterial agent / photocatalyst incorporated)  
(woodgrain toning is wood powder mixing)  
Retainer / aluminium extruded shape material  
End cap / ABS Plastic

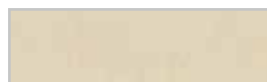


## PLAIN COLOURS FOR INDOOR USE

Standard colours



NO.11 - Ivory White



NO.12 - Light Berge



NO.13 - Beige

Indent colours



NO.02 - Grey



NO.22 - Light Brown



NO.23 - Chocolate

## WOOD COLOURS FOR INDOOR USE

Standard colours



NO.71 - Natural



NO.73 - Birch



NO.74 - Teak

Indent colours



NO.72 - Cherry



NO.75 - White Teak



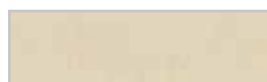
NO.70 - Light Oak

## FOR OUTDOOR USE PLAIN COLOURS

Standard colours



NO.03 - Dark Grey

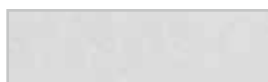


NO.12 - Light Berge



NO.13 - Beige

Indent colours



NO.02 - Grey



NO.22 - Light Brown



NO.23 - Chocolate

## FOR OUTDOOR USE WOOD COLOURS



NO.90 - Oak



NO.91 - Sepia Brown

## SPECIAL INDENT COLOURS FOR INDOOR / OUTDOOR HANDRAIL



NO.04 - Soft Black



NO.10 - Plain White



NO.05 - Black



NO.45 - Wine Red



NO.51 - Olive Green



NO.62 - Dark Blue